

THE HOMES MAGAZINE FOR MODERN LIVING

Livingetc

February 2024 ₹150

INDIA EDITION

**EASY REVAMPS
FAB FOYERS
EXPERT TIPS**

50+
NEW PRODUCTS
TO MAKE A GREAT
FIRST IMPRESSION

THE
MAKEOVER
ISSUE





The living room is the protagonist of the entire design scheme. The monolithic staircase is fabricated on site and finished in distressed metallic tones by Colour Coats; the wall anchoring the staircase is covered in Esmeralda grey marble with a leather finish; the sofa sets are from Art Nova while the rug is from Cocoon Rugs, and the centre table and bar unit are customised pieces.

ZEN HEIGHTS

Pooja Bihani, the founder of Spaces and Design, champions bespoke living in this Kolkata home through material diversity and maximising volume

WORDS SNEHA SHAH PHOTOS SURYAN//DANG STYLING SAMIR WADEKAR

The double-height expanse provides ample luxury of space. Tying the space together is Dover white marble on the floor while the centre tables anchoring the seating are from Alsorg. The white chairs are from Gubi and the grey armchair is from &Tradition. An eye-catching detail is the asymmetrical vertical slates in white ashwood, functioning as a perforated layer before the window.



The entrance lobby, clubhouse, and community hall of a residential building in Kolkata, already showcased the design sensibilities of Pooja Bihani, the founder and principal architect of Spaces and Design. So, when she was approached to design a home in the same building, for Ritika and Vivek Goyal and their two boys, it felt like familiar territory. “We are first-generation entrepreneurs and wanted the space to reflect our love for travel and our taste for finer things - embracing the luxury of space with asymmetrical, abstract, and organic elements,” expresses the young couple. The design narrative of this 6,000 sq ft duplex apartment stands witness to the collaboration between the designer and homeowner, resulting in a space brimming with dramatic moments and statement design. The living room is an expansive double-height space that generously stretches to include a cascading 19-foot-high waterfall. Functioning as the beating heart of the home, this waterfall transforms the atmosphere as it flows over a staggered, stone-finish backdrop, infusing the space with a sense of fluid tranquillity. “As the clients entertain a lot, they expressed a desire for striking design features on a substantial scale. We mutually agreed on this large waterfall in the middle of the home, which, in turn, inspired the home’s name, Fountainhead”, recalls Pooja.

There’s so much more to the living room, thanks to Pooja’s signature style of layering materials. A bronze-gold staircase, with an antique finish, makes a bold statement against a wall covered in Italian marble, boasting a leather finish. Beyond just adding glamour, this staircase also represents a strong structure that triumphed over tough challenges. “We had to break and rebuild the wall it’s anchored to, for the desired

“The living room is an expansive double-height space that generously stretches to include a cascading 19-foot-high waterfall”

outcome”, shares Pooja. Another highlight that adds an extra dimension to the space, is the large installation by artist Bandana Jain. Crafted from multiple corrugated sheets featuring a wave-like pattern, the sculpture resembles a gracefully hanging drape on the wall. An inventive detail, born out of a beam obstacle, lends an additional aesthetic layer to the double-height windows in the living room. Asymmetrical vertical slates, finished in textured white ash were introduced to function as grills. These slats create a dynamic play of natural light and shadow, during the day on the furniture.

With three bedrooms in the layout, Pooja’s design expertise also stands out notably in the children’s bedroom, crafted to serve them through their growing years. A joint sanctuary for the boys, this room cleverly incorporates transitional zones like a study nook, play haven, bunk beds, walk-in closets and a jacuzzi. It accommodates their distinct interests, fostering a sense of independence while maintaining the sibling connection. Joyful shapes punctuate the walls, dressed in safari-themed wallpapers, creating a playful ambience in this room. Every nook and corner of this home is packed with custom and characterful details, each revealing a unique story yet echoing one another - a collection of ever-present curiosity and unending wonder. ♦ spacesanddesign.com

The dining room highlights a textural play of materials. The wall behind the console is composed of 3D wooden beading and finished with liquid metal paint; adjacent to it is a creamy white wall with 3D layering of panels and the wall abutting the window is finished in Sukupira grey dyed veneer from Century Ply. Complementing the dining table which is from Cattelan Italia, is the 'Aestoroids' sculptural lighting from Klove



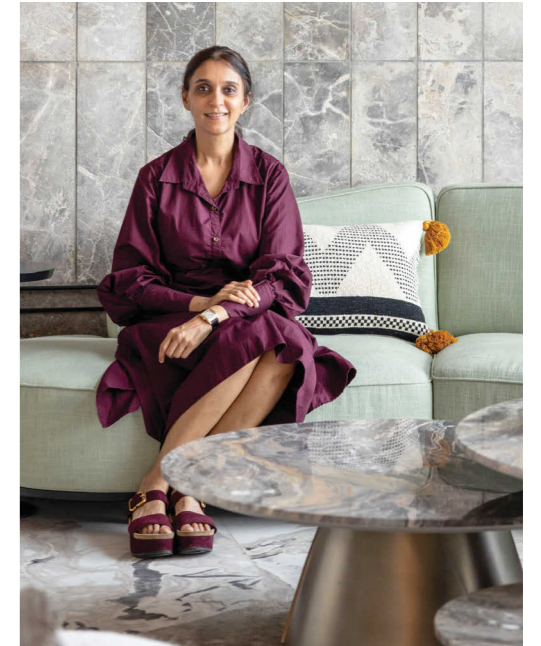
“We are first-generation entrepreneurs and wanted the space to reflect our love for travel and our taste for finer things - embracing the luxury of space with asymmetrical, abstract, and organic elements”

Clockwise from top, the master bedroom is conceived in muted tones with pops of colour. While the headboard is customised on site, the bed is from Alsorg and bed linen from Cottons & Satins. The children's bedroom has a playful vibe with a safari-themed wallpaper from Dolce Bambino. A striking contrast is seen in the children's bathroom, with the use of ochre-coloured piccolo tiles and terrazzo from Classic Marble Company

The towering totems seen here are from Ikai Asai, which lend an organic yet quirky touch. The sleek monochrome chairs are from Fritz Hansen and the main door behind is bespoke on site and embossed with motifs



AS THE FOUNDER AND PRINCIPAL ARCHITECT of Spaces and Design, Pooja Bihani's design sensibilities involve innovative use of materials and textural play, with a signature style of layering. Based in Kolkata, her practice imbibes a bespoke approach with many stand-out elements across projects, that always leave an impression of curiosity



The black console is an avant-garde piece from Giani's En Vogue and steals the spotlight in the dining area. The rustic-looking lampshade is from Lumiere

A PERFECT BACKGROUND SCORE/MUSIC FOR THIS HOME WOULD BE?

'Dawn' soundtrack from Pride and Prejudice.

WHAT WOULD A COFFEE TABLE BOOK ON THIS HOME BE TITLED?

Fountainhead Part 2.

WHAT WAS THE BIGGEST SPLURGE WHILE DESIGNING THIS HOME?

Undoubtedly, the Waterfall!

IF THIS HOME WERE A CELEBRITY, WHO WOULD IT BE AND WHY?

Adam Scott, the Australian golfer, who is also known for his appreciation for design and architecture.

A COLOUR COMBINATION THAT ALWAYS WORKS BEST FOR YOU?

Greige - the right amount of grey and the right amount of beige.